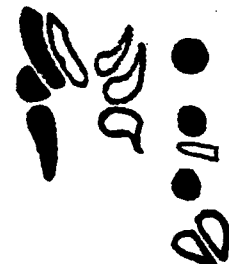




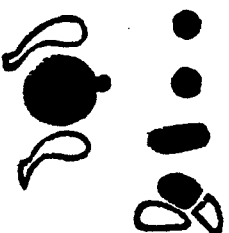
B \flat



B \flat



C



C \sharp - D \flat

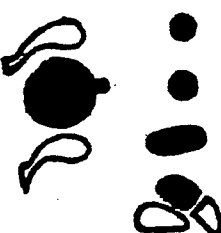


\flat

\flat

\flat

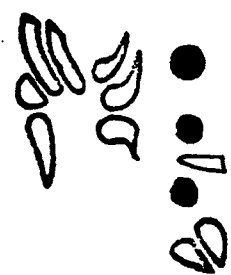
\sharp (\flat)



D



D \sharp - E \flat



E



F

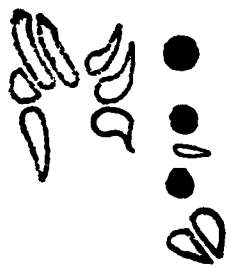


\flat

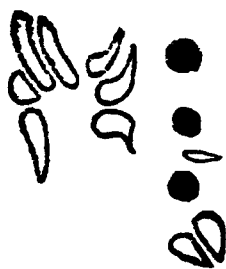
\sharp (\flat)

\flat

\flat



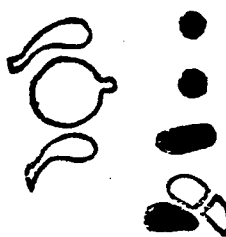
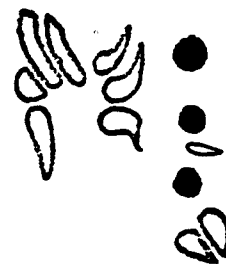
F# - Gb



F# - Gb



G



G# - Ab

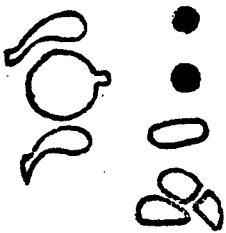
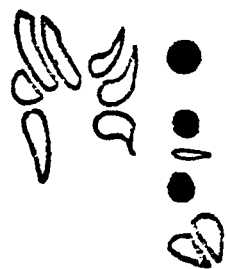


#0

#0 (b0)

0

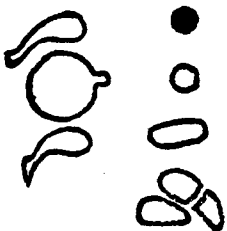
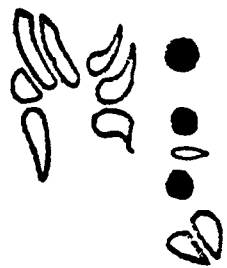
#0 (b0)



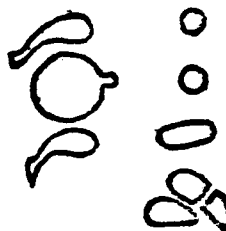
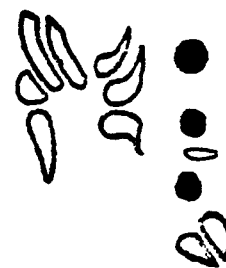
A



A# - Bb



B



C

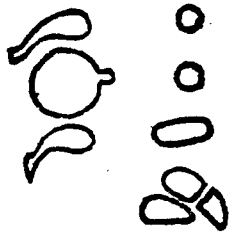


0

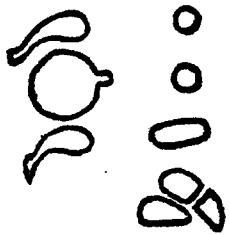
#0 (b0)

0

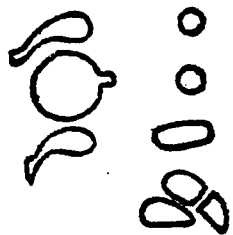
0



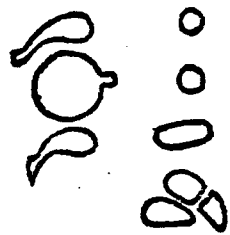
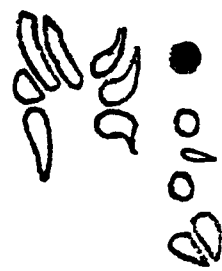
C#-Db



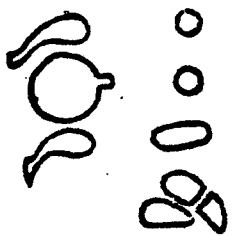
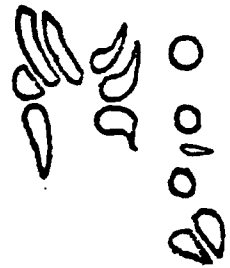
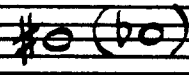
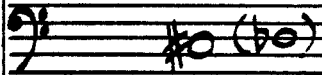
D



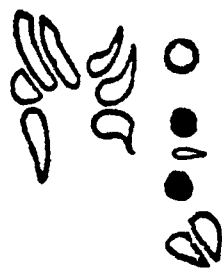
D#-Eb



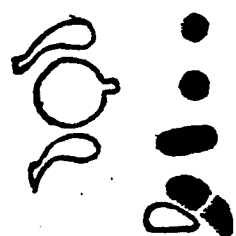
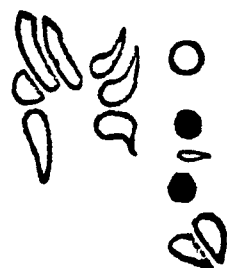
E



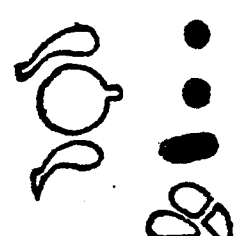
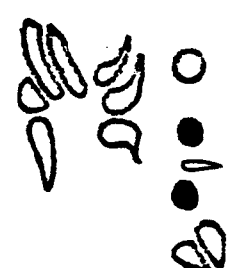
F



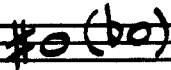
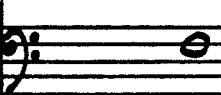
F#-Gb

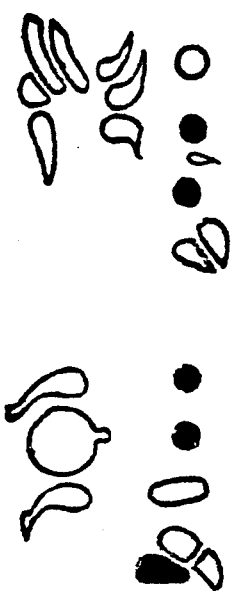


F#-Gb



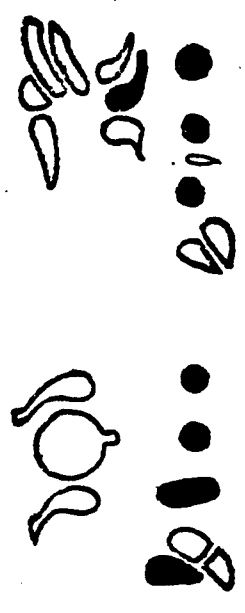
G





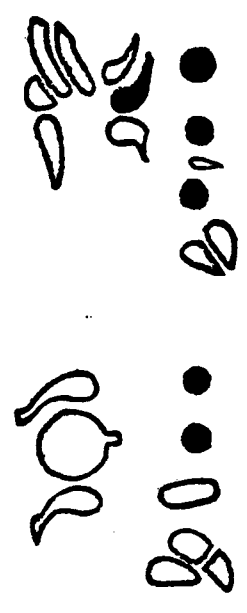
G# - Ab

#o (bo)



G# - Ab

#o (bo)



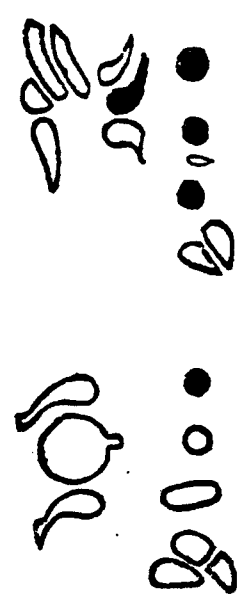
A

o



A# - Bb

#o (bo)



B

o



C

o



C# - Db

#o (bo)

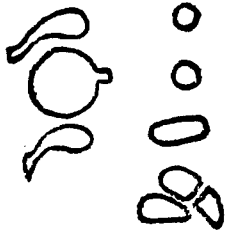


C# - Db

#o (bo)



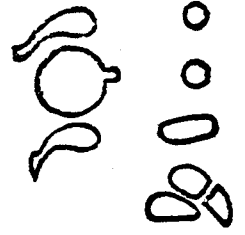
A
a



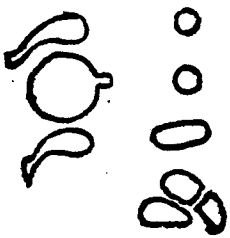
A
a



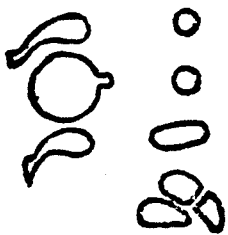
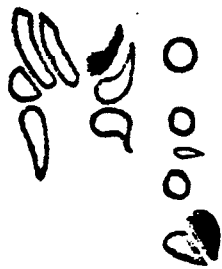
D# - Eb
#a (ba)



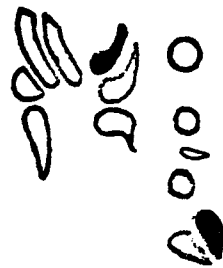
D# - Eb
#a (ba)



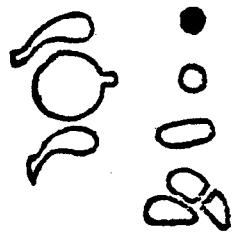
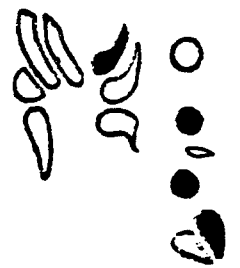
ш
ш



п
п



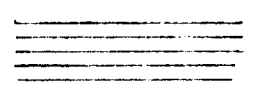
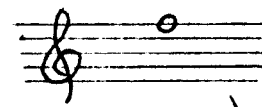
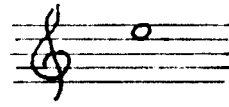
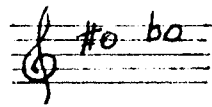
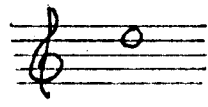
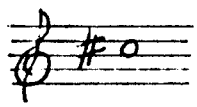
п
п



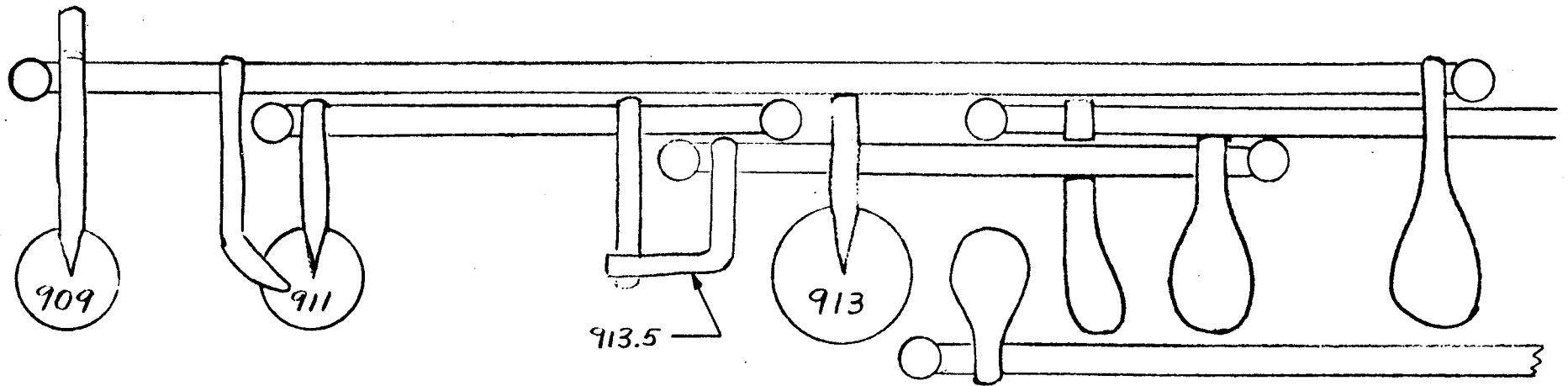
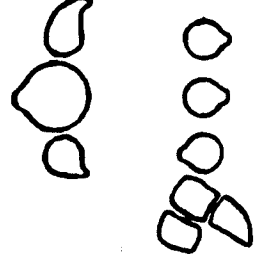
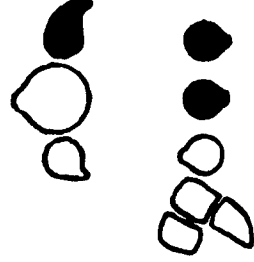
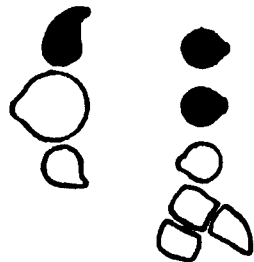
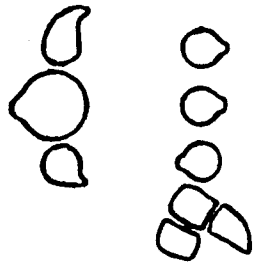
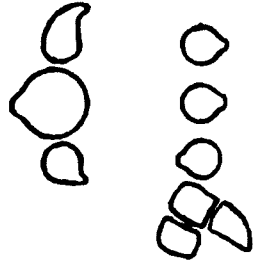
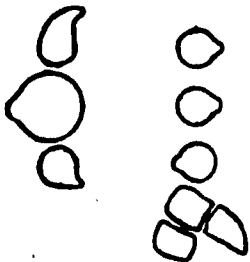
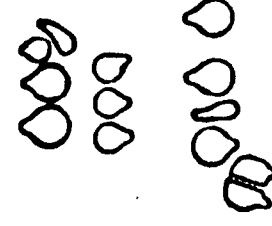
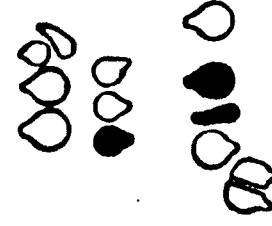
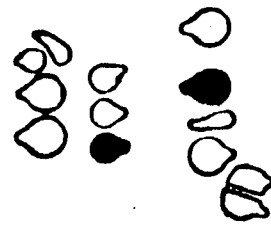
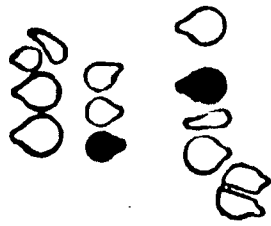
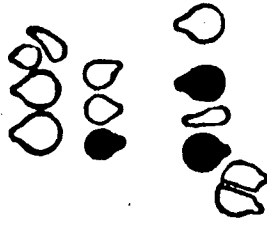
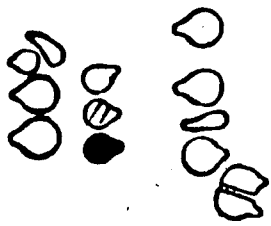
F# - Gb
#a (ba)

<p>G #F (bE)</p>	<p>G# - Ab #F (bE)</p>	<p>A #F</p>	<p>A# - Bb #F (bE)</p>
----------------------	----------------------------	-----------------	----------------------------

<p>A# - Bb #F (bE)</p>	<p>B #F</p>	<p>B #F</p>	<p>C #F</p>
----------------------------	-----------------	-----------------	-----------------

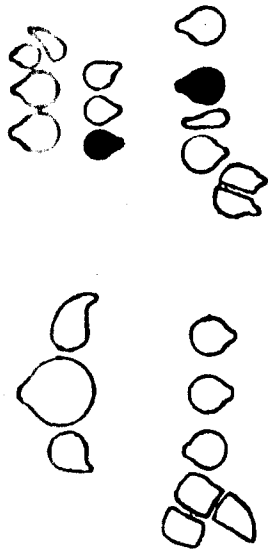


(GOOD LUCK!)

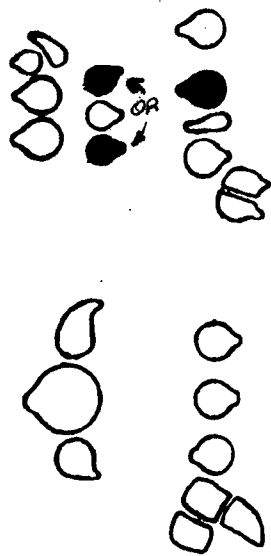


For very high notes a special key adjustment is required. Adjust arm 913.5 so that pad 911 does not quite close when 913 is closed. The amount of leakage should be small. Pads 909 and 911 must close together perfectly. The leakage on 911 not only plays the high notes but will also benefit the octave and high F# and G.

E_2^b



E_3^b



E_3^h

